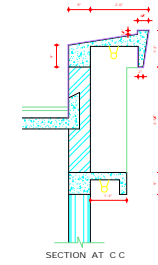
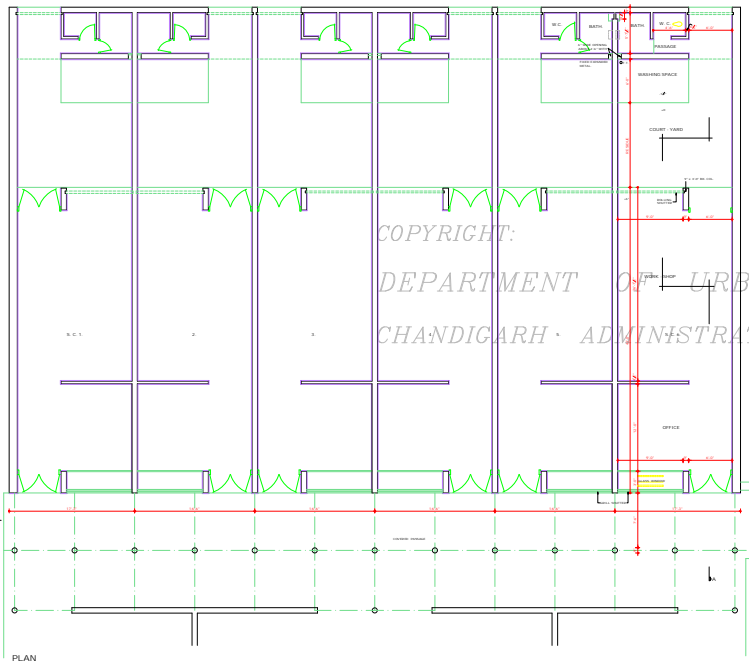


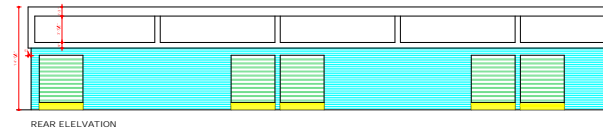
SECTIONAL ELEVATION AT B B



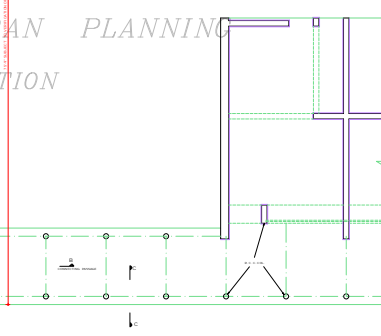
SECTION AT C C



PLAN



REAR ELEVATION



ATTESTED TRUE COPY
 BY M. S. KISHAN
 ASST. ARCHITECT

THIS DRAWING HAS BEEN PREPARED BY THE CHIEF ARCHITECT OF THE ARCHITECTURE, PLANNING AND URBAN DESIGN DIVISION, CHANDIGARH ADMINISTRATION. IT IS THE PROPERTY OF THE ARCHITECTURE, PLANNING AND URBAN DESIGN DIVISION, CHANDIGARH ADMINISTRATION. IT IS NOT TO BE REPRODUCED OR TRANSMITTED IN ANY FORM OR BY ANY MEANS, ELECTRONIC OR MECHANICAL, INCLUDING PHOTOCOPYING, RECORDING, OR BY ANY INFORMATION STORAGE AND RETRIEVAL SYSTEM, WITHOUT THE WRITTEN PERMISSION OF THE CHIEF ARCHITECT, CHANDIGARH ADMINISTRATION.

DEPARTMENT OF ARCHITECTURE

- NOTES
1. ALL DIMENSIONS ARE TO FACE UNLESS OTHERWISE SPECIFIED.
 2. FINISHES TO BE AS PER SPECIFICATION.
 3. MATERIAL SPECIFICATIONS TO BE AS PER SPECIFICATION.
 4. ALL DIMENSIONS ARE TO BE TAKEN AS PER SPECIFICATION.

SCALE

1:10	1:20	1:40	1:80
------	------	------	------

NO.	DESCRIPTION	DATE
REVISION		

BY M. S. KISHAN
 ASST. ARCHITECT

BY M. S. KISHAN
 ASST. ARCHITECT

BY M. S. KISHAN
 ASST. ARCHITECT

BY M. S. KISHAN
 ASST. ARCHITECT

BY M. S. KISHAN
 ASST. ARCHITECT

BY M. S. KISHAN
 ASST. ARCHITECT

BY M. S. KISHAN
 ASST. ARCHITECT

BY M. S. KISHAN
 ASST. ARCHITECT

BY M. S. KISHAN
 ASST. ARCHITECT

BY M. S. KISHAN
 ASST. ARCHITECT

BY M. S. KISHAN
 ASST. ARCHITECT

BY M. S. KISHAN
 ASST. ARCHITECT

BY M. S. KISHAN
 ASST. ARCHITECT

BY M. S. KISHAN
 ASST. ARCHITECT

BY M. S. KISHAN
 ASST. ARCHITECT

BY M. S. KISHAN
 ASST. ARCHITECT

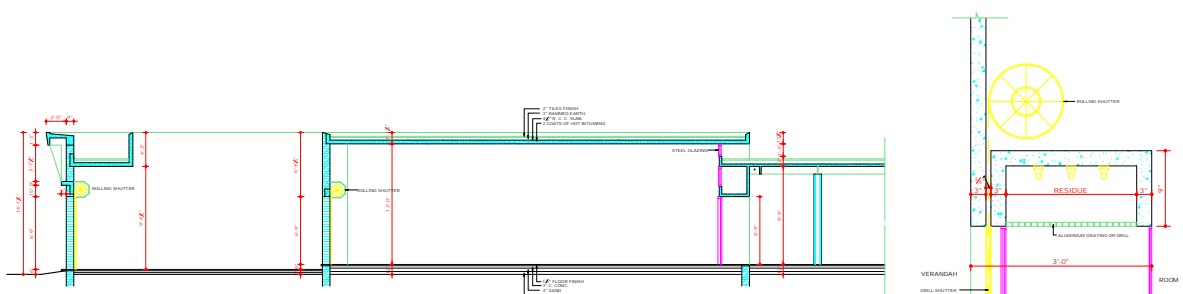
BY M. S. KISHAN
 ASST. ARCHITECT

BY M. S. KISHAN
 ASST. ARCHITECT

BY M. S. KISHAN
 ASST. ARCHITECT

BY M. S. KISHAN
 ASST. ARCHITECT

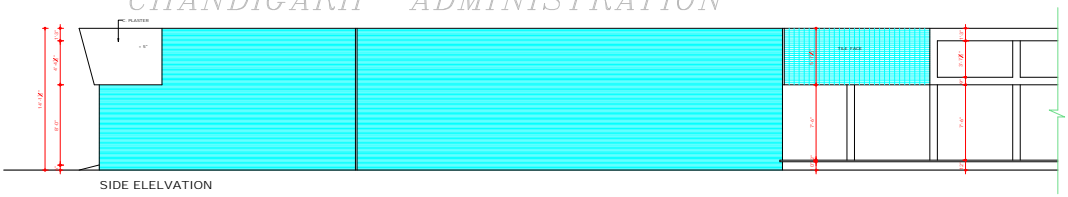
BY M. S. KISHAN
 ASST. ARCHITECT



SECTION AT AA'
COPYRIGHT:

SECTION AT DD'

DEPARTMENT OF URBAN PLANNING
CHANDIGARH ADMINISTRATION



SIDE ELEVATION

DEPARTMENT OF
ARCHITECTURE, U.T.

NOTES

- THIS DRG. IS THE PROPERTY OF THE GOVT. OF ARCHITECTURE, CHANDIGARH U.T. AND EXACTLY THE COPY OF PRINTING AND MUST NOT BE ALTERED, COPIED OR USED IN WHOLE OR IN PART WITHOUT THE PERMISSION OF THE GOVT. IN WRITING.
- THIS DRG. IS ACTUALLY TRACED FROM DRG. No. 3 OF JOB No. 493 ON DATED: 28th NOV. 1972.

NOTE:
THIS DRAWING HAS BEEN COMPUTERISED ON: 23/04/06
FROM DRG. No. 3, JOB No. 493

S.No	DESCRIPTION	DATE	SIGN
------	-------------	------	------

REVISIONS

SIGNED DALJIT SINGH CHIEF ADMINISTRATOR	
SIGNED M. N. GUPTA 21.11.72 CHIEF ARCHITECT	SIGNED J. S. DETHI 24.11.72 SENIOR ARCHITECT
SIGNED D.P. MEHTA 24.11.72 ARCHITECT	SIGNED GIRAL SINGH 24.11.72 ASSTT. ARCHITECT

OFFICE OF THE
CHIEF ARCHITECT
CHANDIGARH, U.T.

SCALE = 1/4" TO A FOOT DATE: 28.11.72

DRAWN SIGNED 28th Nov. 1972	DRG. No.	JOB No.
D.P. GARG	2	493

SCOOTER REPAIR SHOPS.
SECTOR - 21-C
CHANDIGARH.
SECTION - AA' AND SIDE ELEVATION.

DISCLAIMER
THOUGH EVERY CARE HAS BEEN TAKEN TO PROVIDE THE CORRECT VERSION OF THE ARCHITECTURAL CONTROL ON THIS DIGITISED FORM, NOT IN CASE OF ANY DISCREPANCY, THE MASTER COPY OF THE ARCHITECTURAL CONTROL APPLICABLE ON EACH PHYSICAL SITE, AS AVAILABLE IN THE COMMERCIAL RECORDS OF THE OFFICE OF CHIEF ARCHITECT OF HESHA'S INTERPRETATION WILL OVERRULE THE DIGITISED FORMAT.

ATTESTED TRUE COPY
SIGNED
30.11.72
ASSTT. ARCHITECT